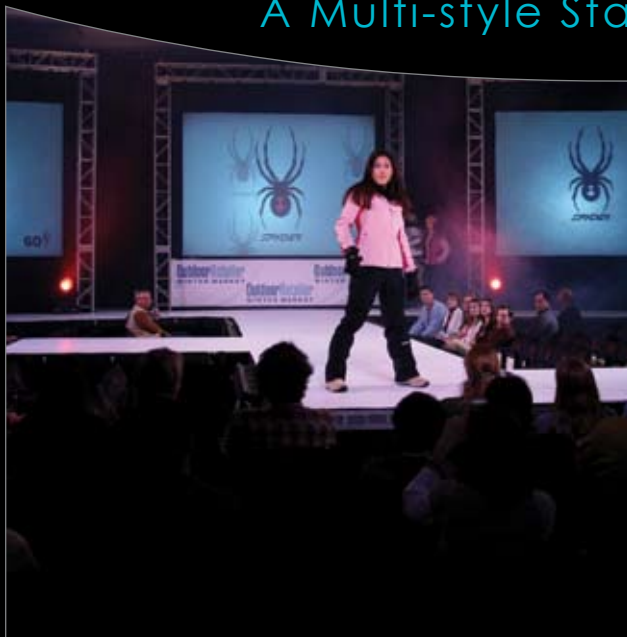


# THE COMPLEX

## A Multi-style Staging Venue



### Where trouble starts. In a good way.

It's a feeling. Like when an unexpected package arrives. Or your secret office crush brushes past. Or that hottie in the convertible checks you out. When that feeling hits, your heart beats faster, you laugh harder, things just feel easy.

That's the feeling at The Complex, Salt Lake City's newest event venue. But be warned: drinks may get spilled, phone numbers will be exchanged, and some people may kick up trouble. In a good way.

### It's Always Friday

The Complex lets you create that Friday feeling with four distinct event spaces under one roof to use individually or together. It's simple: Invite your guests to a cool downtown location where the scene makes them feel like VIP's. Whether you brand your own private music club, host a launch party for your company or screen a world premiere film, The Complex has the space, tools and people-power to create the vibe you want.

**If you can dream it up, we can stage it at The Complex.**

### What can this place do?

Host an intimate gathering or mobilize a small army. The Complex is 25,000 square feet of possibility, adjacent to Downtown Salt Lake's Gateway District, one block from TRAX and walking distance from most major hotels.

### Amenities:

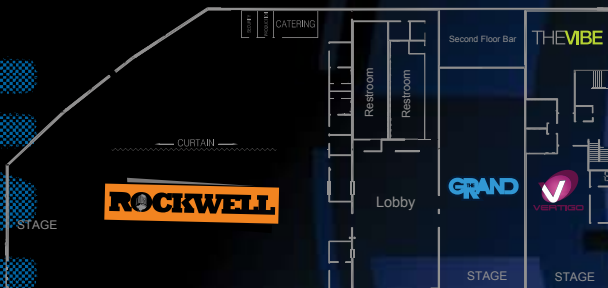
- ✦ All-ages venue and 21+ with full bar
- ✦ Multiple stage and seating configurations
- ✦ Thirty-foot ceilings
- ✦ Exposed wood beams with rigging
- ✦ Modern polished concrete floors
- ✦ Sound and light systems
- ✦ Movable screening
- ✦ Elegant green rooms
- ✦ VIP areas
- ✦ Generous restroom facilities

# THE COMPLEX

## Infinite Possibilities



Complex



### Capacity Spectrum: 200 to 4,000

Product launches / jam band concerts / fundraisers / dance clubs / roller derbies / mud wrestling / fashion shows / raves / film screenings / galas and banquets / chainsaw ice carving / campaign fundraisers / trapeze acrobatics / BMX half-pipe / employee appreciation parties / music video shoots

### The Spaces:



Capacity: 800  
Square Ft.: 4,000

Specs: Music/Event venue, can be booked with the Rockwell or separate.



Capacity: 2,800  
Square Ft.: 16,500

Specs: Ginormous Music/Event venue, can be booked with the Grand or separate, includes Lobby.



Capacity: 200  
Square Ft.: 1050

Specs: Cocktail seating with bar and small stage.



Capacity: 375  
Square Ft.: 1300

Specs: Sleek music club with a bar.

# THE COMPLEX

## How To Do It



**You:** Pick your date, choose your space and show up.

**Us:** The Complex and its in-house event producers, Corporate Staging, will manage the rest.

- ✦ Event Design and Branding
- ✦ Entertainment Booking
- ✦ Audio, Video & Lighting Systems and Operations
- ✦ Scenic and Environmental Design
- ✦ Multimedia Production
- ✦ Pyrotechnics and Special Effects
- ✦ Catering and Bar Services
- ✦ Venue Planning and Coordination

### For Booking Details and Rates Contact:

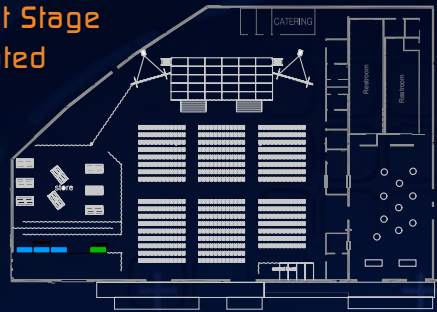
Corporate Staging for The Complex

✦ Karen Domer at **801.908.5454**

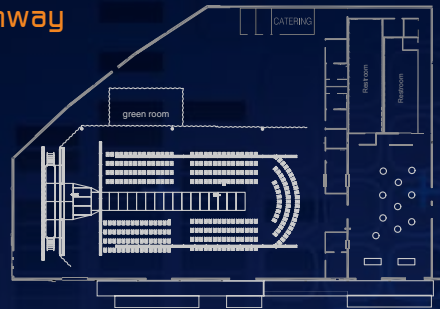
nicepeople@corpstaging.com

These are just a few examples of staging for The Rockwell.

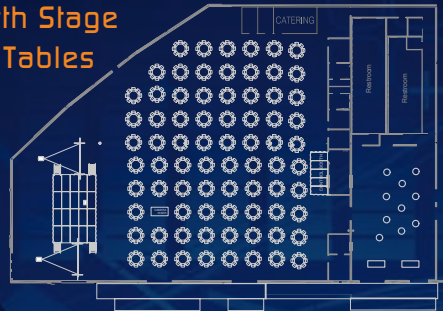
### East Stage Seated



### Runway



### North Stage 77 Tables



### East Stage 32 Tables

